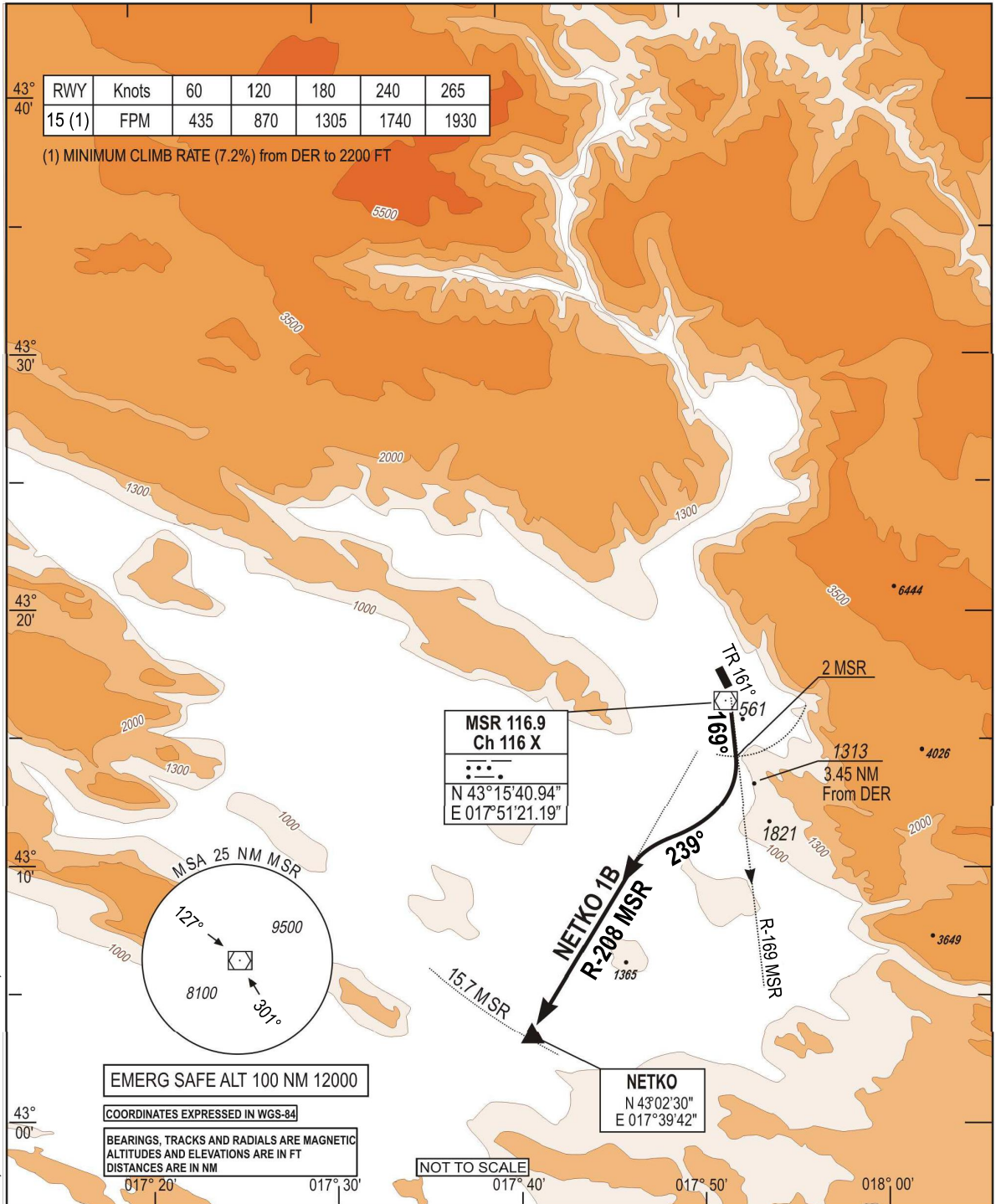


**STANDARD DEPARTURE CHART
INSTRUMENT (SID) - ICAO**

TRANSITION
ALTITUDE
10 000 FT
VAR 5°E (2020)

APP 120.225
129.875
TWR 125.550
ATIS 126.225

**MOSTAR (LQMO)
NETKO 1B RWY 15**



CHG: MAG VAR, MAG BEARINGS, EDITORIAL CHANGES:

SID	DEPARTURE ROUTE DESCRIPTION
NETKO 1B (RWY 15)	<ul style="list-style-type: none"> - After DER, climb TR 161° then R-169 MSR (1) (1) Minimum climb rate : 7.2% from DER to 2200 FT - At 2.0 D MSR, turn right on track 239° - Intercept R-208 MSR outbound direct to NETKO - Then as directed by ATC

THIS PAGE INTENTIONALLY LEFT BLANK